



Rear View

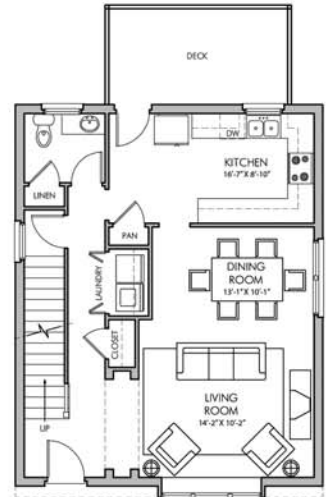


THE
**DREXEL
COTTAGE**
3-4 BR MODEL

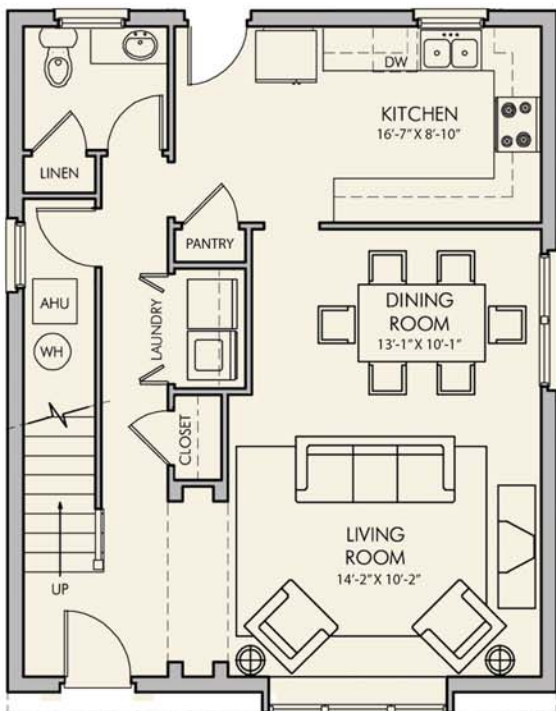
FIRST FLOOR: 732 SQ FT
SECOND FLOOR: 788 SQ FT
TOTAL: 1,520 SQ FT
W/OPT. BASEMENT: 2,252 SQ FT
BEDROOMS: 3-4
BATHROOMS: 2½-3½

This version of the Drexel offers the same authentic English home described for the 2-3 bedroom Drexel model with the addition of another bedroom added to the second floor. This gives the home owner the opportunity to have 3 bedrooms upstairs without a basement or 4 bedrooms total with the optional basement bedroom.

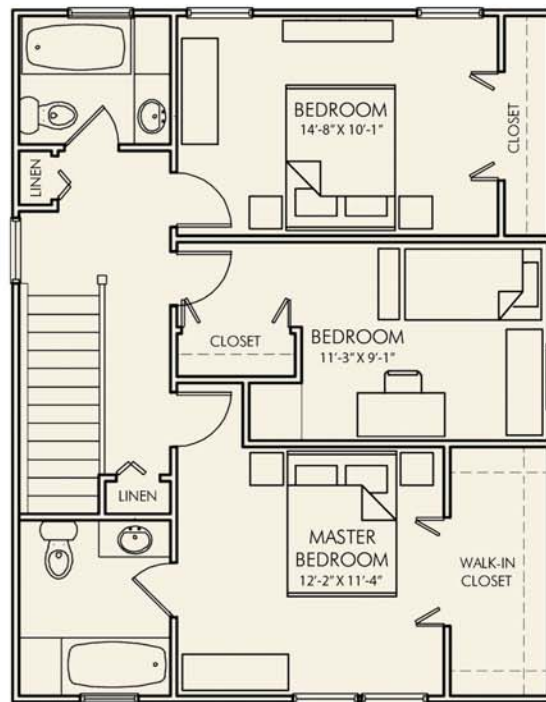
OPTIONAL FIRST FLOOR WITH BASEMENT
(Site Specific)



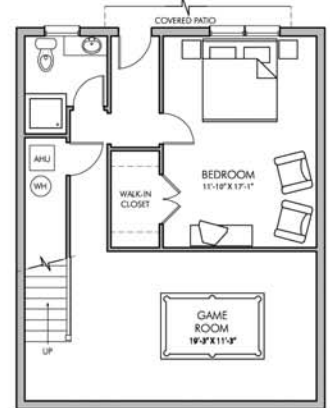
FIRST FLOOR



SECOND FLOOR



OPTIONAL BASEMENT
(Site Specific)





MAIDSTONE

P.O. Box 11 • 11860 NEW KENT HIGHWAY • NEW KENT, VIRGINIA 23124
(804) 557-3166 • E-mail NewKentVillageSales@Cox.net • www.NewKentVillage.net

Drexel Cottage

\$235,000*

Up to 2160 square feet with available space option (lot specific)
Available Space Option: Basement

Standard features

Brick/ Eifs exterior
50 year architectural roof shingles
6" thick exterior walls
Anderson 400 series windows
Kohler plumbing fixtures
GE Profile appliances
Gas range/cook top
Custom solid wood cabinets
Granite countertops
9' ceilings 1st and 2nd floor
Hardwood/ Ceramic floors throughout
High efficient heat pump
w/ Rinnai hydronic backup
Rinnai gas tankless water heater
**Alternate Features Available*
**Price subject to change*

For more information call Catherine Stanley 804.517.1847

