



Optional first-floor master bedroom (rear view)

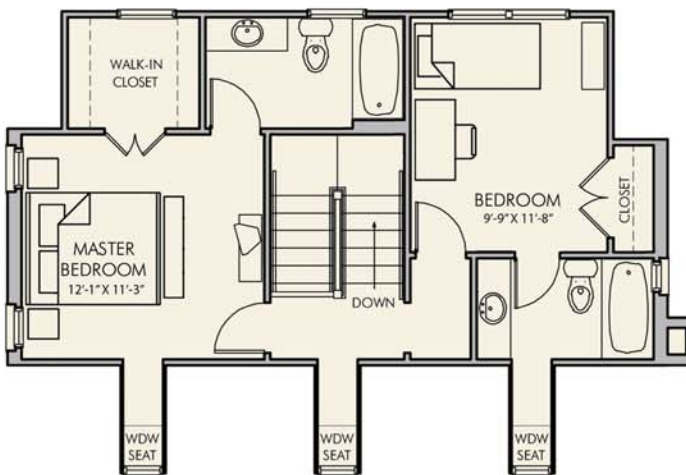
NEW KENT
COURTHOUSE VILLAGE



THE ABBOTS COURT

FIRST FLOOR: 748 SQ FT
SECOND FLOOR: 575 SQ FT
TOTAL: 1,323 SQ FT
W/OPT. BASEMENT: 2,071 SF
BEDROOMS: 2-4
BATHROOMS: 2 1/2 +

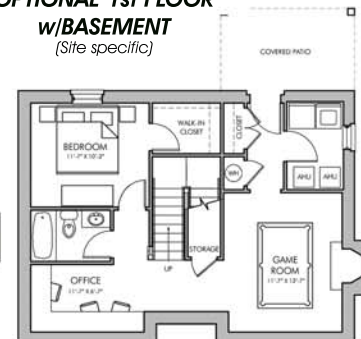
This adorable Georgian garden cottage is a reminder of the quality and charm of yesterday. This home is the perfect size for a young professional, young couple or young spirited. An optional first floor master suite with his and her closets makes room for two large bedrooms upstairs. The first floor features 9' ceilings throughout, a generous kitchen with an island and eat-in bar that opens into the dining room. Take time out with family and friends to enjoy your fireplace in the living room. If more space is what you need, then an optional basement of select units offers an additional bedroom, bath and bonus room for an office, game room or even a media room. A home you can enjoy for a lifetime.



OPTIONAL 1st FLOOR
w/MASTER BDRM
(Site specific)



OPTIONAL 1st FLOOR
w/BASEMENT
(Site specific)



OPTIONAL BASEMENT
(Site specific)



MAIDSTONE

P.O. Box 11 • 11860 NEW KENT HIGHWAY • NEW KENT, VIRGINIA 23124
(804) 557-3166 • E-mail NewKentVillageSales@Cox.net • www.NewKentVillage.net

Abbotts Court Cottage

\$230,000*

Up to 2315 square feet with available space options
Available Space Options: 1st floor master bedroom/bath and/or basement (lot specific)

Standard features

Brick exterior

50 year architectural roof shingles

6" thick exterior walls

Anderson 400 series windows

Kohler plumbing fixtures

GE Profile appliances

Gas range/cook top

Custom solid wood cabinets

Granite countertops

9' ceilings 1st and 2nd floor

Hardwood/ Ceramic floors throughout

High efficient heat pump w/ Rinnai hydronic backup

Rinnai gas water heater

Lennox gas fireplace insert

** Full masonry chimney not included *Alternate Features Available*

**Price subject to change*

For more information call Catherine Stanley 804.517.1847

